

# PRODUCT DETAILS

## FR 1.0

(FR Series - Surface Mount Aluminum)



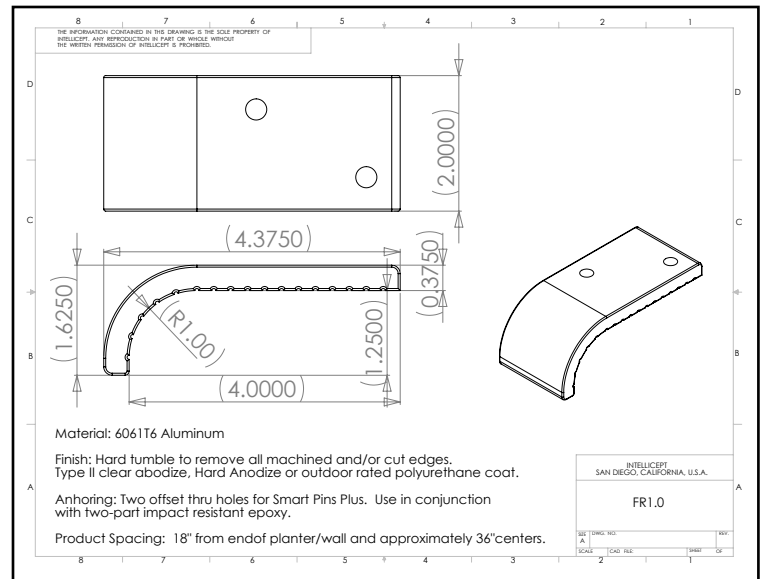
1547 N. Cuyamaca, El Cajon, CA 92020  
Tel 619-447-6374 Fax 619-447-6396

[www.skatestoppers.com](http://www.skatestoppers.com)

**Description:** This part is designed for walls with a 1" radius edge. Model FR 1.0 is commonly used on 2" bullnose brick and poured concrete with 1" radius edge. This part uses two SMART PINS PLUS anchors.



(shown in Clear Anodize)



**Material:** 6061-T6 Aluminum

**Finish:** Hard tumble to remove all machined and/or cut edges. Aluminum finish options include Type II Clear Anodize or Hard Anodize.

**Corner Radius:** For corner with 1" radius.

**Outside Dimensions:** 2" (wide) x 4" (deep) x 1-5/8" (tall)

**Anchoring:** Anchored with two offset thru holes for SMART PINS PLUS anchors. Use anchors in conjunction with two-part impact resistant epoxy.

**Product Spacing:** 18" from end of planters/walls and approximately 36" centers. Do not apply at grout joints.