

# PRODUCT DETAILS

## FR 1.0

(FR Series - Surface Mount Aluminum)

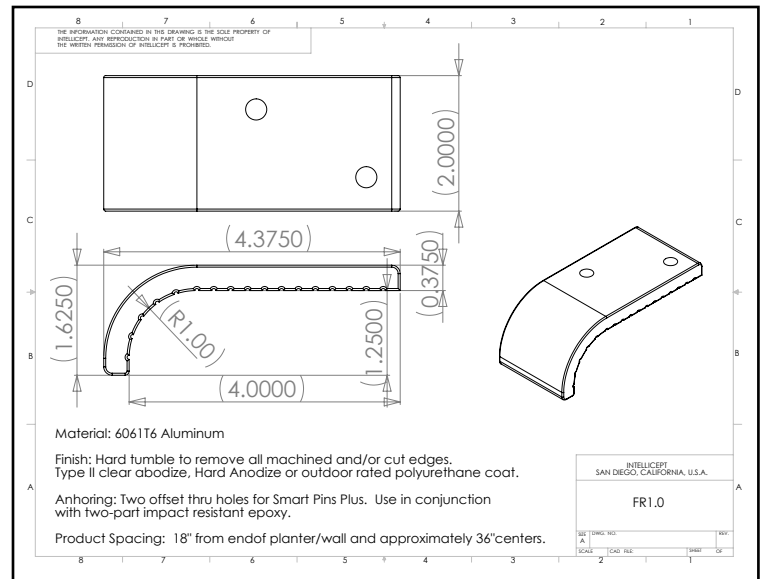


**Description:** This part is designed for walls with a 1" radius edge. Model FR 1.0 is commonly used on 2" bullnose brick and poured concrete with 1" radius edge. This part uses two SMART PINS PLUS anchors.

**This product is not intended for use on steps, stairs, sidewalk curb, or any pedestrian trafficked surfaces.**



(shown in Clear Anodize)



**Material:** 6061-T6 Aluminum

**Finish:** Hard tumble to remove all machined and/or cut edges. Aluminum finish options include Type II Clear Anodize or Hard Anodize.

**Corner Radius:** For corner with 1" radius.

**Outside Dimensions:** 2" (wide) x 4" (deep) x 1-5/8" (tall)

**Anchoring:** Anchored with two offset thru holes for SMART PINS PLUS anchors. Use anchors in conjunction with two-part epoxy.

**Product Spacing:** 18" from end of planters/walls and approximately 36" centers. Do not apply at grout joints.