

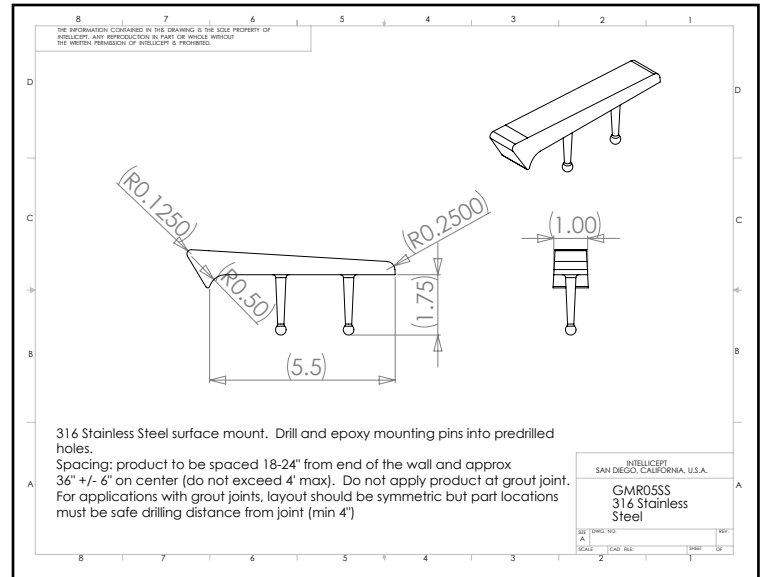
PRODUCT DETAILS

GMRO5SS

("G-mini" Series - Surface Mount Stainless) Steel

Description: This Stainless Steel part is designed for curbs with 1/2" radius edge. GMRO5SS is most commonly used on concrete to complement larger G-series parts. This part uses two concealed G-mini anchors.

This product is not intended for use on steps, stairs, sidewalk curb, or any pedestrian trafficked surfaces.



Material: 316 Stainless Steel

Standard Finish: Brushed

Corner Radius: For corners with 1/2" radius.

Outside Dimensions: 1" (wide) x 5.5" (deep)

Anchoring: Anchored with two blind G-mini anchor pins. Use anchors in conjunction with two-part epoxy.

Product Spacing: 18"-24" from end of curbs and approximately 36" centers (not to exceed 48"). Do not apply product at grout joint. For applications with grout joints, layout should be symmetric but part locations must be safe drilling distance from joint (min 4").

SKATE STOPPERS
1547 N. Cuyamaca, El Cajon, CA 92020
Tel 619-447-6374 Fax 619-447-6396
www.skatestoppers.com