

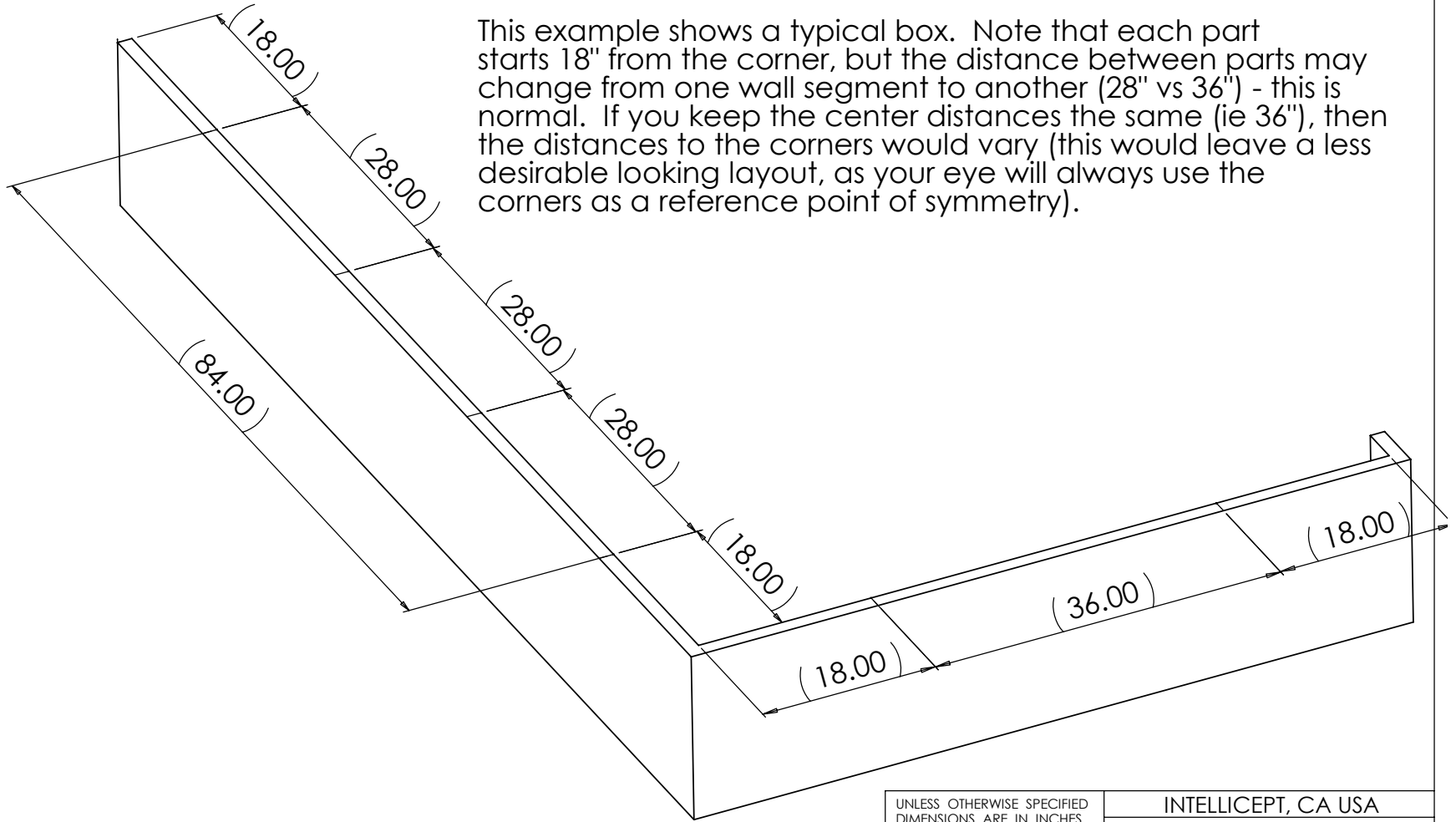
F.I. Series Skate Deterrent ORANGE PROTECTIVE BOOT

The orange protective coating on this product is a temporary coating that is designed to keep the part and the anodize finish clean during the installation/pour phase of construction. We recommend installing the parts in the form notches only days prior to pouring (notching can be performed at any time). We recommend removing the boot within a week after the pour. Use a knife to cut the boot flush at the concrete surface and pull the rubber boot.

NOTE: The rubber boot may plasticize if left on for extended periods of time or left to prolonged UV exposure. If the boot has hardened, you may need use chemical agent (M.E.K.) and a rag to remove it.

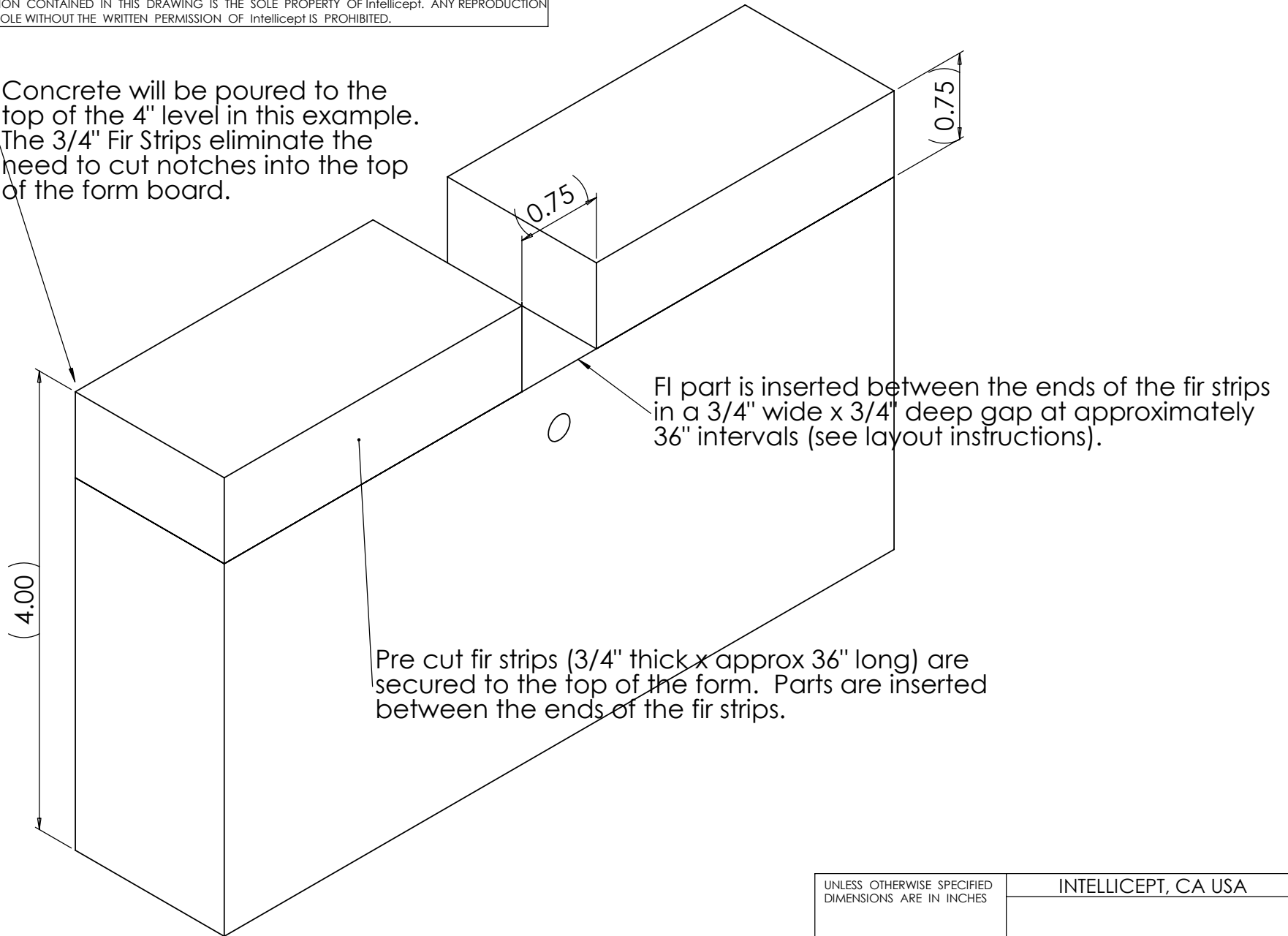
Layout the parts at approximately 18" from the end points (NOTE: measure from the inside of the form to account for the thickness of the form board). Then divide the distance between the end points into equal increments to define the center spacing (target 28-42" centers).

This example shows a typical box. Note that each part starts 18" from the corner, but the distance between parts may change from one wall segment to another (28" vs 36") - this is normal. If you keep the center distances the same (ie 36"), then the distances to the corners would vary (this would leave a less desirable looking layout, as your eye will always use the corners as a reference point of symmetry).



UNLESS OTHERWISE SPECIFIED DIMENSIONS ARE IN INCHES		INTELLICEPT, CA USA	
MATERIAL		FI Series Layout	
FINISH			
SCALE	CAD FILE:	SHEET	

Concrete will be poured to the top of the 4" level in this example. The 3/4" Fir Strips eliminate the need to cut notches into the top of the form board.



FI part is inserted between the ends of the fir strips in a 3/4" wide x 3/4" deep gap at approximately 36" intervals (see layout instructions).

Pre cut fir strips (3/4" thick x approx 36" long) are secured to the top of the form. Parts are inserted between the ends of the fir strips.

IMPORTANT: Parts are designed to be set into a 3/4" x 3/4" Notch. Failure to set the depth to the proper height may result in improper installation.

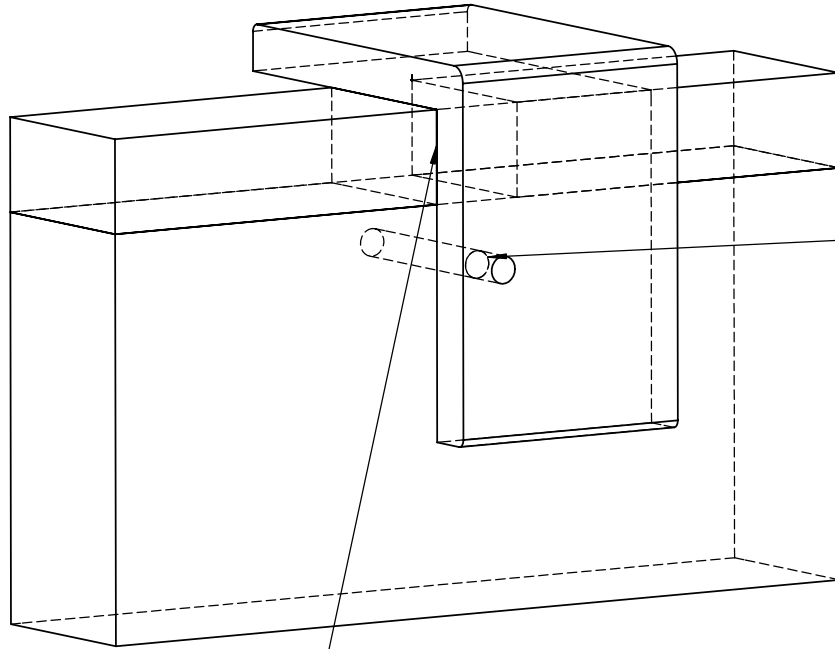
UNLESS OTHERWISE SPECIFIED DIMENSIONS ARE IN INCHES

INTELLICEPT, CA USA

MATERIAL

FI Series Installation by Fir Strips

FINISH



1) From outside of form, align left edge of bracket to the left edge of the notch.

2) Once the bracket is aligned to the form, use the drill jig to drill a 7/32" hole through the form board.

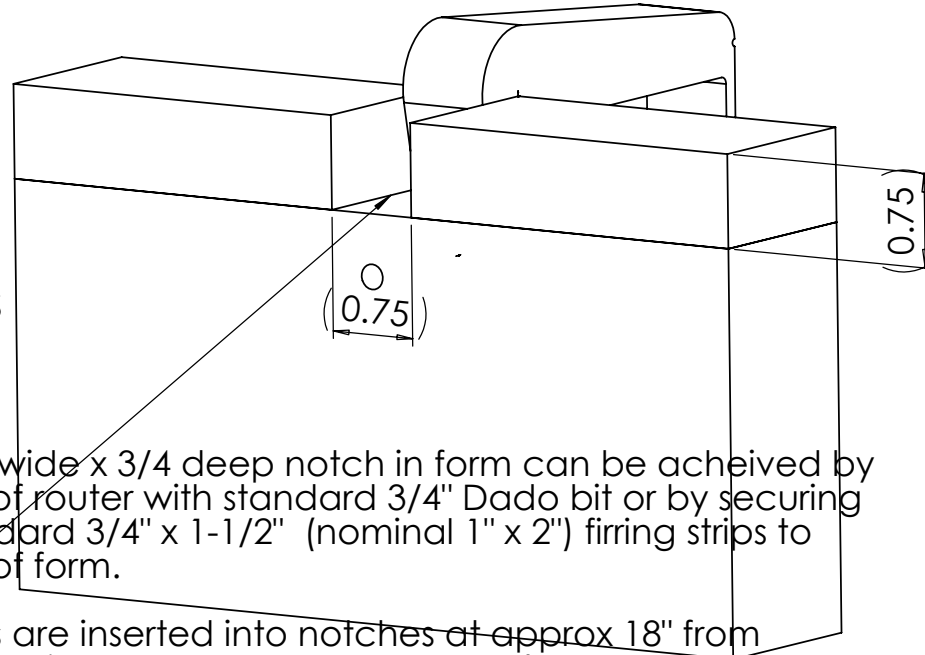
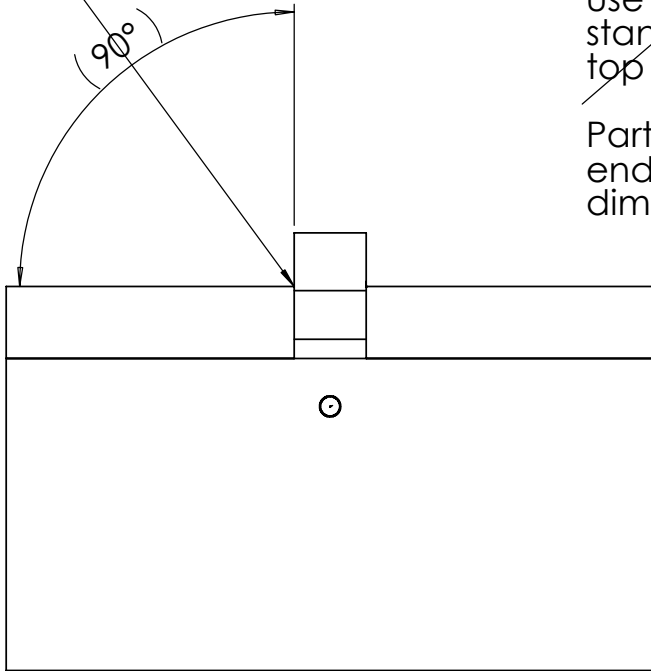
Correct Hole

When you remove the drill guide, the thru hole should be centered on the notch and 1/2" from the bottom of the notch.

Note: The hole is bigger than the #6 screw to facilitate easy alignment of the screw to the part during attachment.

UNLESS OTHERWISE SPECIFIED DIMENSIONS ARE IN INCHES		INTELLICEPT, CA USA	
MATERIAL		FI Series REV B Drill Jig Alignment	
FINISH			
SCALE	CAD FILE:	SHEET	

IMPORTANT: BE SURE THAT PART IS SQUARE TO FORM WHEN TIGHTENING WITH SCREWS AND DURING EDGE TROWELLING.

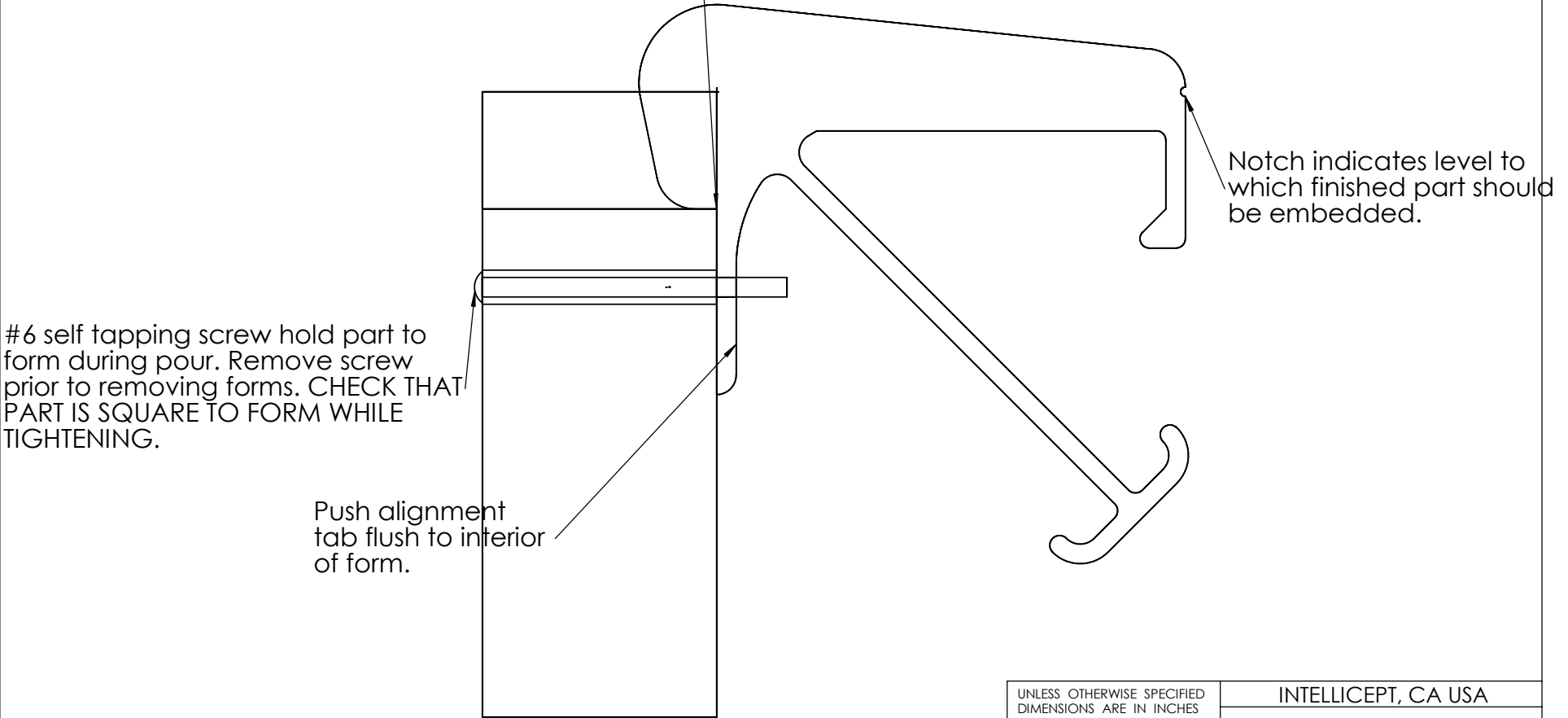


3/4" wide x 3/4" deep notch in form can be achieved by use of router with standard 3/4" Dado bit or by securing standard 3/4" x 1-1/2" (nominal 1" x 2") furring strips to top of form.

Parts are inserted into notches at approx 18" from end points and approx 36" centers (actual center dimensions will vary to achieve symmetrical layout).

UNLESS OTHERWISE SPECIFIED DIMENSIONS ARE IN INCHES		INTELLICEPT, CA USA	
MATERIAL		FI Series REV B Installation Illustration	
FINISH			
SCALE	CAD FILE:	SHEET	

IMPORTANT: PART MUST REST FLAT ON BOTTOM OF NOTCH TO ENSURE THAT IT IS SQUARE TO WALL EDGE. CHECK FOR SQUARE WHEN TIGHTENING TO WALL WITH SCREWS. FAILURE TO SQUARE WILL LEAD TO CROOKED PART AFTER POUR.



UNLESS OTHERWISE SPECIFIED DIMENSIONS ARE IN INCHES		INTELLICEPT, CA USA	
MATERIAL		FI Series REV B Installation Illustration	
FINISH			
SCALE	CAD FILE:	SHEET	